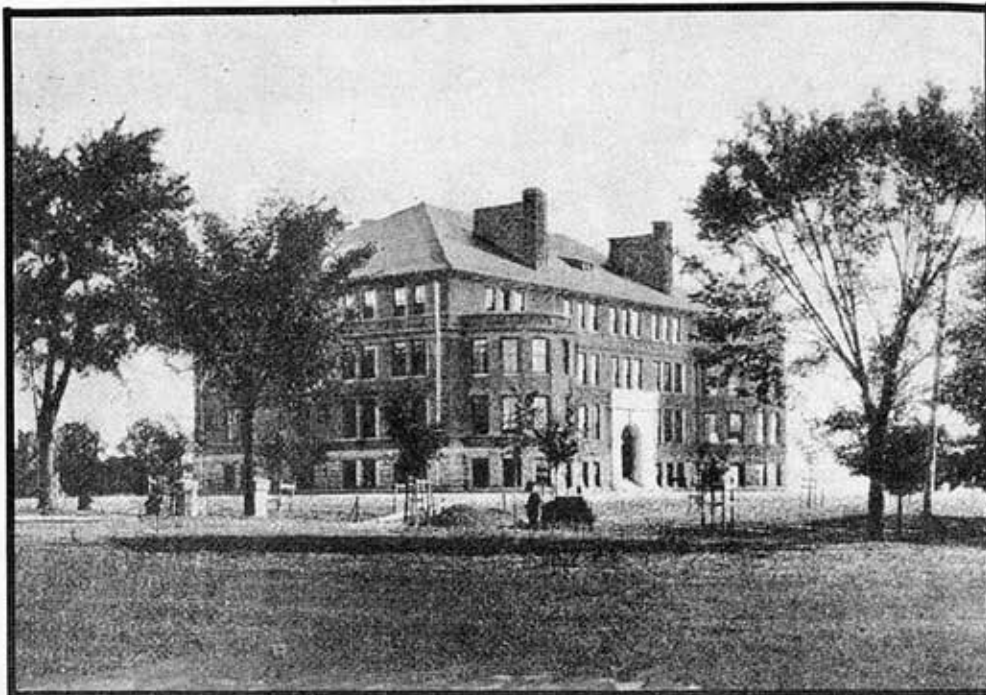




Although legal opinion divided on the board's responsibility to honor the Buford Act, it decided to test the measure's constitutionality by a vote of 5 to 3. Rolla forces persuaded a student named Harry T. Heimberger to bring suit, and in its October term the Missouri Supreme Court ruled that the board must carry out the law's provisions. The School of Mines had matured.

Loyalty and commitment to the interest of Boone and Phelps counties, too little state financial support to divide between two ambitious institutions, the machinations of local politics, and the distance between two campuses administered by a single politically appointed board, all help to explain the sometimes troubled birth and adolescence of the Missouri School of Mines and Metallurgy.

Originally published in Missouri Historical Review. Used by permission of Lawrence O. Christensen.



Norwood Hall in 1911. (Photo courtesy of Earl and Anna Roberts)



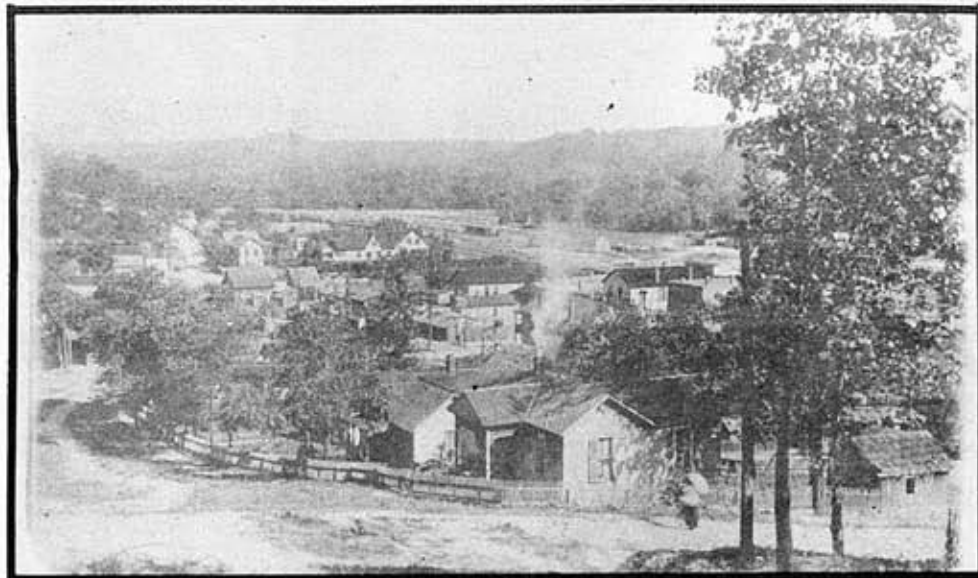
*Every Bloomin' Thing*

206 Business Loop West  
Waynesville, Mo.  
65583  
Phone  
(314) 774-6775

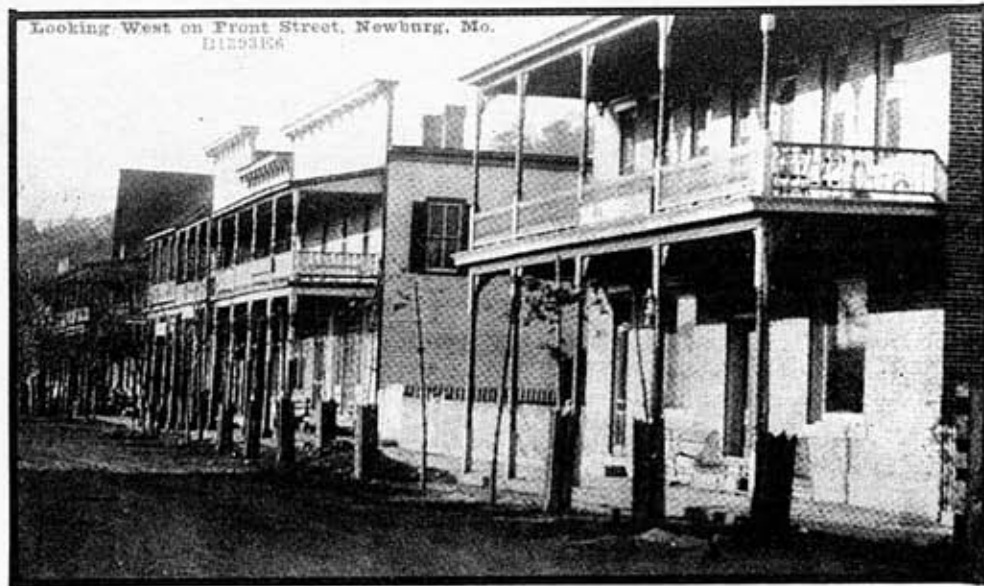
*Flowers for all occasions*  
Fresh • Dried • Silk Plants  
Hand Crafts • Flowers by Wire  
"PROFESSIONAL DESIGNER SERVICES"  
Quality Blended Tobacco - Pipes & Accessories  
VISA - MC - AMEX

9:00-5:00 Monday-Friday, 9:00-1:00 Saturday

# NEWBURG



A bird's eye view of Newburg around 1908. (Photo courtesy of Earl and Anna Roberts)



Looking west on Front Street in Newburg Missouri around 1908. (Photo courtesy of Earl and Anna Roberts)



Bridge at Newburg, Mo. (Photo courtesy of Earl and Anna Roberts)



View of the Gasconade River overlooking Jerome, Missouri. (Photo courtesy of Earl and Anna Roberts)